

# CLUSTER

## 2- PERSON UPHOLSTERED BENCH




**Cod. OCLUS201**

### DESCRIPTION

2-person bench with upholstered seat and backrest

### NOTE

Accessories: Armrest; Table for seat substitution; Fixed legs.

11M fire retardant B01 and B03 fabrics upholstered shell 

**CATAS** UNI EN 1022, 1728, 15373, 13761

### SPECIFICATIONS

---

#### STRUCTURE

Aluminum finished steel frame 1,2mm; Upholstered seat and backrest with internal wooden panel

#### PADDING

Seat:: thickness 20 mm, density 40 Kg/m<sup>3</sup>

Backrest: thickness 15 mm, density 30 Kg/m<sup>3</sup>

#### ARMS

In metallo vern. Alluminio

#### LEGS / FRAME / BASE

Steel tube legs 90×30×1,5 with aluminum finish

Steel tube beam 80×40×1,5 with aluminum finish

#### UPHOLSTERY

categories B01-B03-C01-C05-D02-D06-P01 (SEE FABRIC FOLDER)

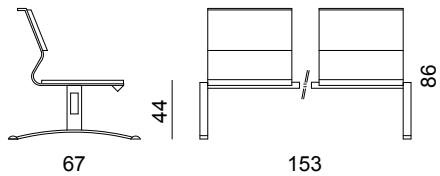
### SIZE

Dimensions in millimeters

bench  
L 1530H 860 D 670

seat  
L 490H 440D 440

backrest  
L 490 H 475



### WEIGHT

Net weight: 31 Kg  
Gross weight: 33 Kg

### PACKAGING

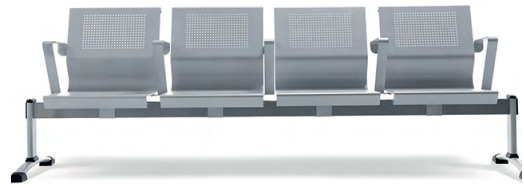
2 packages

### VOLUME

M3 box: 0,4

# CLUSTER

## 2-PERSON BENCH



**Cod. OCLUS202**

### DESCRIPTION

2-person bench with perforated metal seats and backrests.

### NOTE

Accessories: Armrest; Table for seat substitution; Fixed legs.

**CATAS** UNI EN 1022, 1728, 15373, 13761

### SPECIFICATIONS

---

#### STRUCTURE

Aluminum finished steel frame 1,2mm

#### ARMS

Aluminum finished steel

#### LEGS / FRAME / BASE

Steel tube legs 90×30×1,5 with aluminum finish

Steel tube beam 80×40×1,5 with aluminum finish

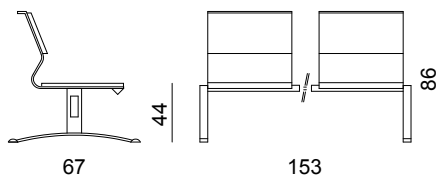
### SIZE

Dimensions in millimeters

bench  
L 1530 H 860 D 670

seat  
L 490 H 440 D 440

backrest  
L 490 H 475



### WEIGHT

Net weight: 29 Kg  
Gross weight: 32 Kg

### PACKAGING

2 packages

### VOLUME

M3 box: 0,4

# CLUSTER

## 3-PERSON UPHOLSTERED BENCH

Cod. **OCLUS301**




### DESCRIPTION

3-person bench with upholstered seat and backrest

### NOTE

Accessories: Armrest; Table for seat substitution; Fixed legs.

11M fire retardant B01 and B03 fabrics upholstered shell 

**CATAS** UNI EN 1022, 1728, 15373, 13761

### SPECIFICATIONS

---

#### STRUCTURE

Aluminum finished steel frame 1,2mm; Upholstered seat and backrest with internal wooden panel

#### PADDING

Seat: thickness 20 mm, density 40 Kg/m<sup>3</sup>

Backrest: thickness 15 mm, density 30 Kg/m<sup>3</sup>

#### ARMS

Aluminum finished steel

#### LEGS / FRAME / BASE

Steel tube legs 90×30×1,5 with aluminum finish

Steel tube beam 80×40×1,5 with aluminum finish

#### UPHOLSTERY

categories B01-B03-C01-C05-D02-D06-P01 (SEE FABRIC FOLDER)

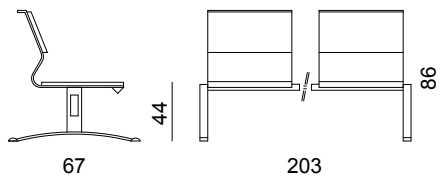
### SIZE

Dimensions in millimeters

bench  
L 2030 H 860 D 670

seat  
L 490 H 440 D 440

backrest  
L 490 H 475



#### WEIGHT

Net weight: 45 Kg  
Gross weight: 48 Kg

#### PACKAGING

2 packages

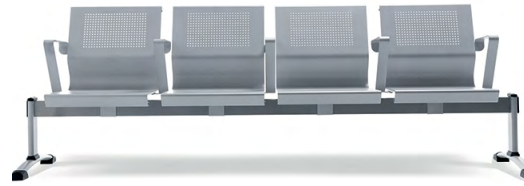
#### VOLUME

M3 box: 0,4

# CLUSTER

## 3-PERSON BENCH

Cod. OCLUS302



### DESCRIPTION

3-person bench with perforated metal seats and backrests.

### NOTE

Accessories: Armrest; Table for seat substitution; Fixed legs.

**CATAS** UNI EN 1022, 1728, 15373, 13761

### SPECIFICATIONS

---

#### STRUCTURE

Aluminum finished steel frame 1,2mm

#### ARMS

Aluminum finished steel

#### LEGS / FRAME / BASE

Steel tube legs 90×30×1,5 with aluminum finish

Steel tube beam 80×40×1,5 with aluminum finish

### SIZES

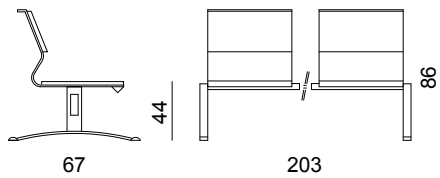
---

Dimensions in millimeters

bench  
L 2030 H 860 D 670

seat  
L 490 H 440 D 440

backrest  
L 490 H 475



### WEIGHT

Net weight: 42 Kg  
Gross weight: 45 Kg

### PACKAGING

2 packages

### VOLUME

M3 box: 0,4

# CLUSTER

## 4-PERSON UPHOLSTERED BENCH



**Cod. OCLUS401**

### DESCRIPTION

4-person bench with upholstered seat and backrest

### NOTE

Accessories: Armrest; Table for seat substitution; Fixed legs.

11M fire retardant B01 and B03 fabrics upholstered shell

**CATAS** UNI EN 1022, 1728, 15373, 13761

### SPECIFICATIONS

---

#### STRUCTURE

Aluminum finished steel frame 1,2mm; Upholstered seat and backrest with internal wooden panel

#### PADDING

Seat: thickness 20 mm, density 40 Kg/m<sup>3</sup>

Backrest: thickness 15 mm, density 30 Kg/m<sup>3</sup>

#### ARMS

Aluminum finished steel

#### LEGS / FRAME / BASE

Steel tube legs 90×30×1,5 with aluminum finish

Steel tube beam 80×40×1,5 with aluminum finish

#### UPHOLSTERY

categories B01-B03-C01-C05-D02-D06-P01 (SEE FABRIC FOLDER)

### SIZES

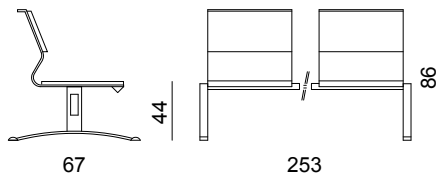
---

Dimensions in millimeters

bench  
L 2530 H 860 D 670

seat  
L 490 H 440 D 440

backrest  
L 490 H 475



#### WEIGHT

Net weight: 59 Kg  
Gross weight: 63 Kg

#### PACKAGING

2 packages

#### VOLUME

M3 box: 0,41

# CLUSTER

## 4-PERSON BENCH



**Cod. OCLUS402**

### DESCRIPTION

4-person bench with perforated metal seats and backrests.

### NOTE

Accessories: Armrest; Table for seat substitution; Fixed legs.  
UNI EN 1022, 1728, 15373, 13761

### SPECIFICATIONS

---

#### STRUCTURE

Aluminum finished steel frame 1,2mm

#### PADDING

Seat: thickness 20 mm, density 40 Kg/m<sup>3</sup>

Backrest: thickness 15 mm, density 30 Kg/m<sup>3</sup>

#### ARMS

Aluminum finished steel

#### LEGS / FRAME / BASE

Steel tube legs 90×30×1,5 with aluminum finish

Steel tube beam 80×40×1,5 with aluminum finish

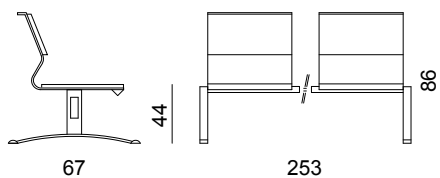
### SIZES

Dimensions in millimeters

bench  
L 2530 H 860 D 670

seat  
L 490 H 440 D 440

backrest  
L 490 H 475



### WEIGHT

Net weight: 59 Kg  
Gross weight: 63 Kg

### PACKAGING

2 packages

### VOLUME

M3 box: 0,41