



**Quadrifoglio Group**

# MIAMI

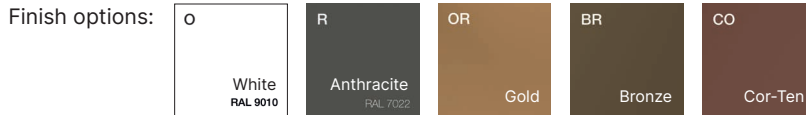
design living

[www.quadrifoglio.com](http://www.quadrifoglio.com)



### METAL FRAME

10×10mm steel frame powder coated in matt colours or liquid coated featuring a metallic effect. Welded steel brackets provide fixing points for the upper element - top, seat or pot. Four anti-slip rubber glides.



### MFC TOPS

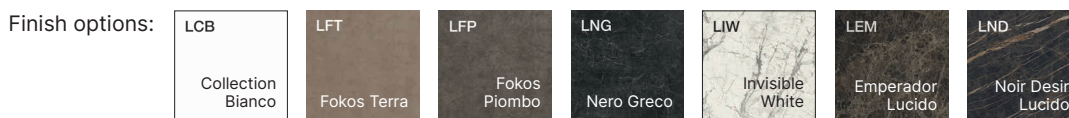
18mm easy to clean scratch-resistant anti-reflective melamine faced chipboard (MFC) top finished with 1mm straight ABS impact resistant edging. Finish options: melamine as well as matt lacquered. MFC panel density: 670/730 kgs per cubic meter.



Tempi di produzione: 5 settimane; oltre alle finiture laccate proposte, tutte le finiture della scala RAL sono disponibili.

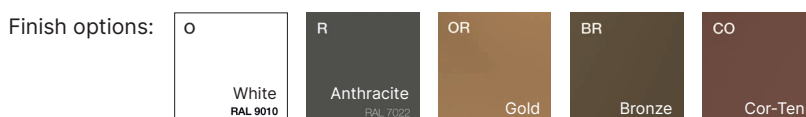
### PORCELAIN TOPS

18mm matt umbra grey painted MDF base with 13mm 45° beveled edges bonded to a 5mm PORCELAIN top with 1.5mm 45° beveled flat edges; the top is either 5mm or 3mm thick depending on the finish.

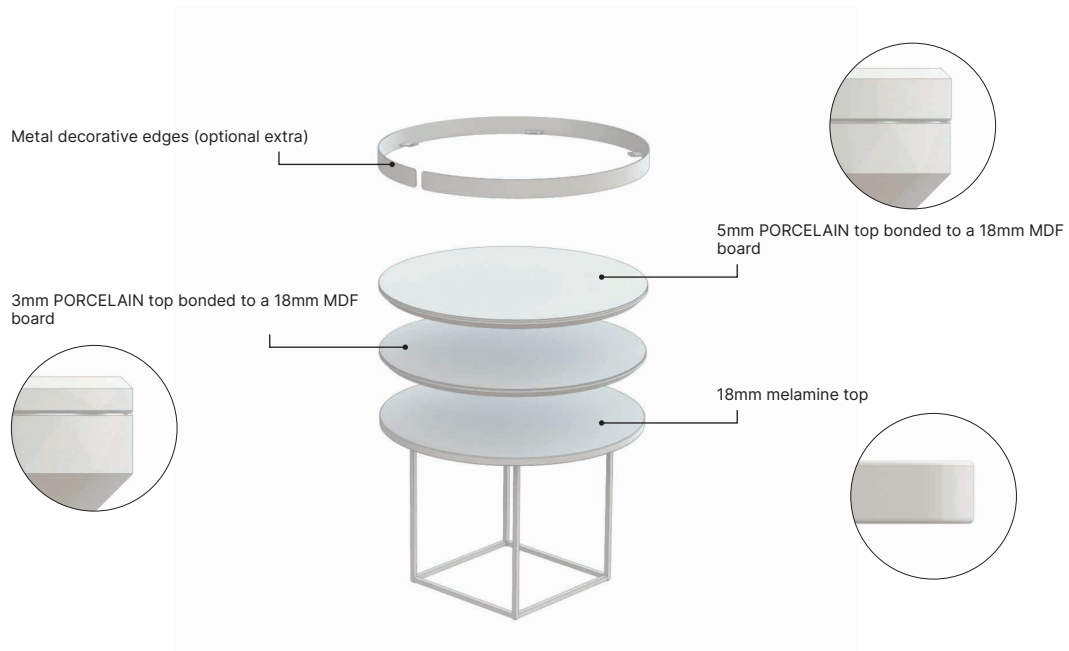


### DECORATIVE METAL EDGES (OPTIONAL EXTRA)

40mm high 2mm steel edges powder coated in matt colours or liquid coated featuring a metallic effect.

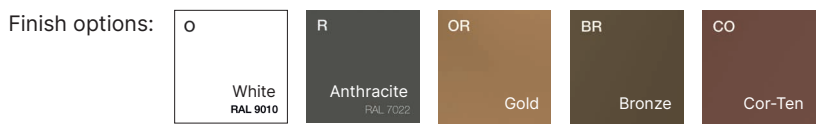


**MIAMI TABLE**



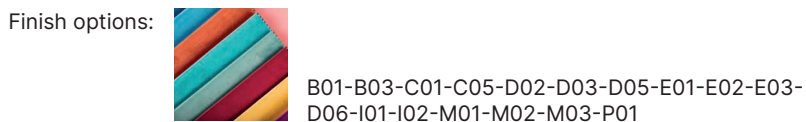
**PLANTERS**

1.5mm steel circular decorative pot powder coated in matt colours or liquid coated featuring a metallic effect. The metal frame is fitted to the bottom of the decorative pot. We recommend setting plants in grow pots and saucers to avoid contact with soil and water. Internal size of small decorative pot  $\varnothing$ 360mm x 140mm high. Internal size of large decorative pot  $\varnothing$ 460mm x 180mm high.

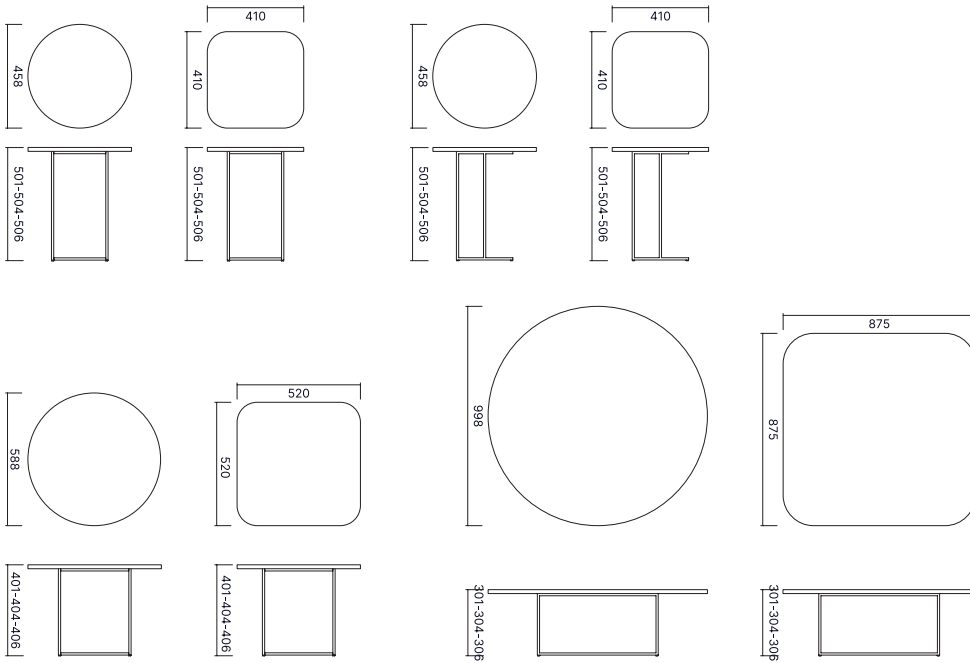


**POUFFS**

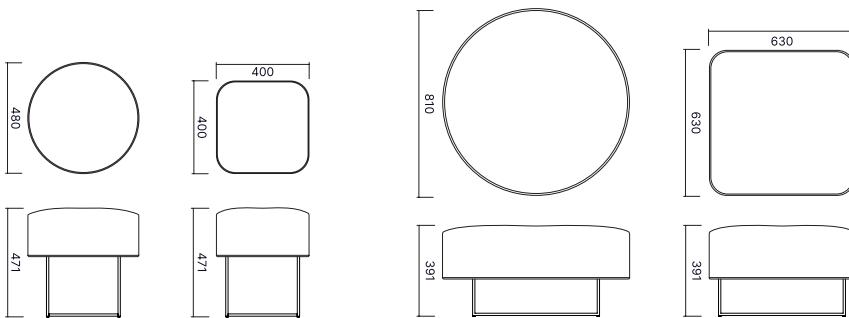
Structural seat inner frame made of solid birch wood, fire resistant rubber and polyster resin padding upholstered in a variety of fabrics and leathers



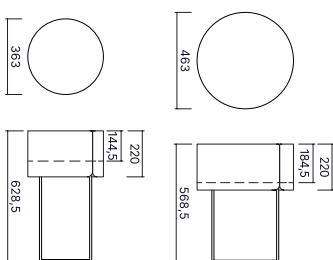
TABLES



POUFFS



PLANTERS







## STANDARDS

Miami range has passed the following tests, attested by **CATAS** analysis laboratory in San Giovanni al Natisone (UD).

- Non domestic tables: safety requirements EN 15372:2016, clause 5.1 - 5.2 2.
- Domestic tables: information for use EN 12521:2015, clause 7 3.
- Horizontal static load test EN 1730:2012, clause 6.2 4.
- Vertical static load test EN 1730:2012, clause 6.3 5.
- Horizontal fatigue test EN 1730:2012, clause 6.4.2 6.
- Vertical impact test EN 1730:2012, clause 6.6 7.
- Stability under vertical load EN 1730:2012, clause 7.2



## MATERIALS AND RECYCLABILITY

Panels used on MIAMI range are exclusively 100% made by recycled wood and respect low formaldehyde emission (CATAS certification Quality Award CARB). Resins used on panels and melamine paper are SVHC substances free (reported on ECHA list update to 12/01/2017)



## CERTIFICATES

Constantly receptive to market requirements, Quadrifoglio Sistemi d'Arredo pay special attention on quality and safety contents in order to provide high products and services. The Company has reached certifications UNI EN ISO 9001/2015, UNI EN ISO 14001/2015 and UNI EN ISO 45001/2018 to confirm his policy. Our products are certified and ensured by FSC™ and ECOLOGICAL PANEL.

COMPANY WITH  
MANAGEMENT SYSTEM  
CERTIFIED BY DNV  
ISO 9001 • ISO 14001  
ISO 45001



## GREEN ENERGY

The Company had installed the photovoltaic system with 4.500 solar panels in a 7.350 m<sup>2</sup> surface that covers almost entirely the factory. The photovoltaic is able to produce 1Mw of a quiet green energy, that does not harm the environment and is waste-free. With his high production capacity the photovoltaic allows us to reduce emissions in the atmosphere of all those polluting substances and to those that contribute to the greenhouse effects. Consequently, such measures make us save every year 180 tonne of petrol oil, 440 tonne of CO<sub>2</sub>, 514kg of sulphur dioxide, 448 kg of nitrogen oxide and 23kg of dust.



## TRANSPORT

Packaging is reduced in order to decrease volumes. Goods collections are responsibly managed and organised with the aim of optimise transports, reducing atmosphere emissions.